

Intelligent Self-Driving Car Architecture: Integrating AI and Machine Learning for Autonomous Mobility Systems

Manish Khute*¹, Dr. Vijayalaxmi biradar²

¹*Research Scholar, Department of Electronics and Communication Engineering, Kalinga University, Naya Raipur [C.G.], India

²Associate Professor Department of Electronics and Communication Engineering, Kalinga University, Naya Raipur [C.G.], India

ABSTRACT

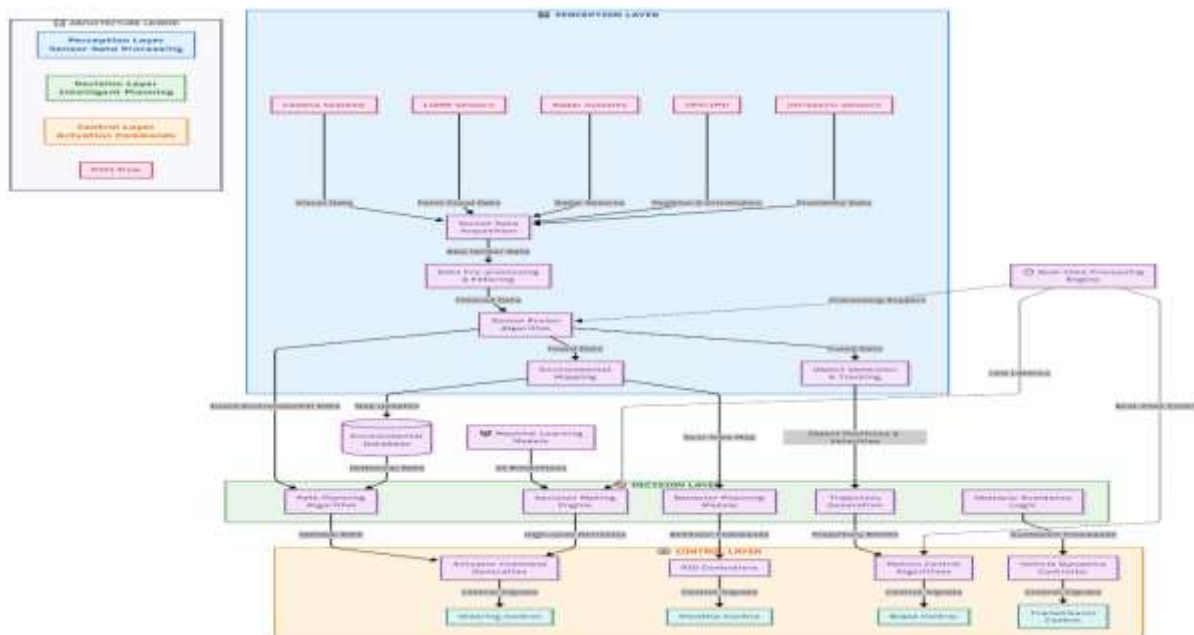
1. INTRODUCTION

The evolution of autonomous vehicles (AVs) has been a transformative journey, marked by significant advancements in sensor technologies, computational power, and algorithmic complexity. Early developments in AVs were primarily focused on automating basic driving tasks, such as cruise control and lane-keeping assistance. However, the advent of more sophisticated sensors like LiDAR, radar, and high-resolution cameras, combined with powerful onboard computing systems, has paved the way for vehicles capable of full autonomy. In recent years, companies like Waymo and Tesla have made notable strides in deploying AVs in real-world environments. Waymo, for instance, has accumulated millions of miles of autonomous driving data, refining its systems to handle complex urban scenarios. Tesla's Autopilot, while still requiring driver supervision, showcases the potential of semi-autonomous driving through advanced driver-assistance systems (ADAS). Artificial Intelligence (AI) and Machine Learning (ML) are the cornerstone technologies enabling the perception, decision-making, and control mechanisms of AVs. AI facilitates the processing and interpretation of vast amounts of sensor data, allowing vehicles to understand and navigate their environment. ML algorithms, particularly deep learning models, are employed to recognize objects, predict dynamic behaviors, and plan optimal driving paths. For instance, convolutional neural networks (CNNs) are extensively used for image recognition tasks, such as detecting pedestrians and other vehicles. Reinforcement learning aids in developing decision-making policies that enable AVs to adapt to diverse driving conditions and unforeseen obstacles. Moreover, advancements in unsupervised learning techniques have contributed to improving the robustness and generalization of AV systems across different driving contexts. This study aims to provide a comprehensive analysis of the architectural frameworks underpinning intelligent self-driving cars, with a particular emphasis on the integration of AI and ML methodologies. The primary objectives are:

- To delineate the key components and layers of AV architecture, encompassing perception, decision-making, and control systems.
- To examine the application of AI and ML algorithms in each of these components, highlighting their contributions to vehicle autonomy.
- To assess the challenges and limitations associated with current AI and ML implementations in AVs.
- To explore future directions for enhancing the intelligence and safety of AV systems through emerging AI and ML techniques.

2. SYSTEM ARCHITECTURE DESIGN

The architecture of a self-driving car is a complex interplay of multiple subsystems, designed to perceive the environment, make intelligent decisions, and control the vehicle in real-time. Modern autonomous vehicles adopt a layered system architecture, typically comprising three primary layers: Perception, Decision, and Control (Paden et al., 2016).



2.1 Layered Structure: Perception, Decision, and Control Layers

1. **Perception Layer:** The perception layer is responsible for sensing and interpreting the vehicle’s surroundings. It integrates data from a variety of sensors, including cameras, LiDAR, radar, ultrasonic sensors, and GPS. This layer performs object detection, lane detection, traffic sign recognition, and pedestrian tracking. Advanced AI and ML models, particularly convolutional neural networks (CNNs), are extensively used to extract meaningful features from raw sensor data ([Grigorescu et al., 2020](#)).
2. **Decision Layer:** The decision layer translates the interpreted environmental information into actionable plans. It encompasses path planning, trajectory prediction, and behavioral decision-making. Techniques such as reinforcement learning, deep Q-networks, and probabilistic models enable the vehicle to make safe and optimal decisions in dynamic environments (Chen et al., 2015). This layer also evaluates multiple potential paths based on predicted movements of surrounding objects and selects the most appropriate driving strategy.
3. **Control Layer:** The control layer executes the planned actions through vehicle actuators, including steering, acceleration, and braking systems. Model predictive control (MPC) and adaptive control algorithms are commonly employed to ensure smooth and precise vehicle maneuvering. The control layer is designed to respond in real-time to both high-level decisions and sudden environmental changes ([Katrakazas et al., 2015](#)).

2.2 Sensor Fusion and Environmental Mapping

Sensor fusion is a critical component that combines data from multiple heterogeneous sensors to provide a coherent understanding of the environment. Techniques such as Kalman filters, particle filters, and Bayesian inference are applied to reduce uncertainty and enhance accuracy (Levinson et al., 2011). Environmental mapping involves constructing detailed 3D maps and occupancy grids, enabling the vehicle to localize itself accurately and anticipate road conditions, obstacles, and traffic patterns.

2.3 Data Acquisition and Real-Time Processing Mechanisms

Real-time data acquisition is essential for autonomous vehicle functionality. High-throughput computing platforms and specialized hardware accelerators (e.g., GPUs and TPUs) process large volumes of sensor data with minimal latency. Streaming architectures, parallel processing, and edge computing techniques are utilized to ensure low-latency perception and decision-making (Chen et al., 2017). These mechanisms enable the system to react promptly to dynamic driving scenarios, ensuring both safety and efficiency.

3. MACHINE LEARNING AND AI FRAMEWORK

The intelligence of autonomous vehicles (AVs) is largely driven by the integration of Artificial Intelligence (AI) and Machine Learning (ML) frameworks, which enable vehicles to perceive, reason, and act in complex and dynamic environments. These frameworks form the computational backbone of self-driving systems, allowing AVs to interpret sensor data, plan optimal trajectories, and adapt to real-time environmental changes.

3.1 Deep Learning for Object Detection and Scene Understanding

Deep learning, particularly Convolutional Neural Networks (CNNs), has revolutionized the perception capabilities of autonomous vehicles. CNN-based architectures enable accurate detection and classification of objects such as vehicles, pedestrians, traffic signs, and road markings from camera and LiDAR inputs (Chen et al., 2017; [Grigorescu et al., 2020](#)). Additionally, semantic segmentation models, such as SegNet and DeepLab, allow AVs to perform scene understanding by categorizing every pixel in an image, which is crucial for tasks like lane detection and drivable area recognition. The combination of CNNs with Recurrent Neural Networks (RNNs) or Long Short-Term Memory (LSTM) networks further enhances temporal perception, enabling the vehicle to anticipate the motion of dynamic objects over time.

3.2 Reinforcement Learning for Path Planning and Decision-Making

While perception focuses on understanding the environment, decision-making and path planning require a predictive and adaptive approach. Reinforcement Learning (RL) has emerged as a robust technique for enabling AVs to learn optimal driving policies through trial-and-error interactions with simulated environments ([Kiran et al., 2021](#)). In RL, an agent (the vehicle) receives feedback in the form of rewards or penalties, learning to maximize long-term performance. Techniques such as Deep Q-Networks (DQN) and Policy Gradient Methods are particularly effective in dynamic traffic scenarios, enabling vehicles to make complex decisions like merging, overtaking, and yielding in real-time.

3.3 Predictive Analytics for Dynamic Environment Adaptation

Autonomous vehicles operate in environments that are inherently uncertain and highly dynamic. Predictive analytics, powered by machine learning regression models, Bayesian networks, and sequence prediction models, allows AVs to anticipate the behavior of surrounding agents, such as other vehicles, pedestrians, and cyclists (Schwartz et al., 2018). This predictive capability enhances safety and efficiency by enabling proactive adjustments in trajectory planning and speed control. Moreover, integrating predictive analytics with sensor fusion enhances robustness, particularly in adverse weather conditions or partially observed environments.

3.4 Integration of ML Techniques in AV Systems

The seamless integration of deep learning, reinforcement learning, and predictive analytics forms the core of a self-driving car's AI system. Deep learning provides perception, RL ensures adaptive decision-making, and predictive analytics supports proactive environmental adaptation. Together, these ML techniques allow autonomous vehicles to operate reliably and safely in complex real-world scenarios, bridging the gap between perception and actionable control.

4. SIMULATION AND IMPLEMENTATION

The development of autonomous vehicle systems requires rigorous simulation and implementation frameworks to validate algorithms before deployment in real-world scenarios. Simulation enables researchers and engineers to model diverse driving conditions, evaluate system performance, and refine AI and ML models under safe, controlled environments.

4.1 Model Training Datasets and Parameters

Effective training of AI and ML models for self-driving cars relies on large-scale, high-quality datasets that encompass varied driving conditions, traffic scenarios, and environmental contexts. Commonly used datasets include KITTI, Cityscapes, and nuScenes, which provide annotated images, LiDAR point clouds, and sensor fusion data (Geiger et al., 2013; Cordts et al., 2016; Caesar et al., 2020).

Key parameters during model training include learning rate, batch size, number of epochs, optimizer type, and network architecture depth. For example, convolutional neural networks for object detection are often trained with learning rates ranging from 0.001 to 0.01 using Adam or SGD optimizers, while reinforcement learning models may require exploration-exploitation tuning to optimize decision-making policies (Chen et al., 2017).

4.2 Simulation Environment and Testing Scenarios

Simulation platforms such as CARLA, AirSim, and LGSVL Simulator provide high-fidelity 3D environments for testing autonomous driving algorithms (Dosovitskiy et al., 2017; Shah et al., 2018). These platforms support diverse weather conditions, urban and rural road layouts, dynamic traffic agents, and pedestrian behaviors. Testing scenarios can include:

- Urban intersections with high vehicle density
- Highway lane changes and merging maneuvers
- Obstacle avoidance and emergency braking situations
- Night-time and adverse weather driving

Simulated testing allows for reproducibility, scalability, and systematic evaluation of edge cases that are difficult to capture in real-world testing.

4.3 Performance Metrics and Evaluation Methodology

Evaluation of autonomous vehicle performance is multi-dimensional and includes metrics for perception, planning, and control. Commonly used metrics include:

- **Perception Accuracy:** Precision, recall, and mean Average Precision (mAP) for object detection and segmentation tasks
- **Trajectory Planning Performance:** Average displacement error (ADE) and final displacement error (FDE) for predicted paths
- **Control Robustness:** Lane-keeping deviation, steering smoothness, braking reaction time, and collision rates
- **Computational Efficiency:** Latency, throughput, and energy consumption of AI models ([Grigorescu et al., 2020](#); [Kiran et al., 2021](#))

5. RESULTS AND DISCUSSION

5.1 Comparative Performance of AI Models

The performance of autonomous vehicle systems heavily depends on the effectiveness of their AI and machine learning models in perception, decision-making, and control tasks. Comparative analysis of different AI models provides insight into their strengths, limitations, and suitability for real-time deployment.

Perception Models: For object detection and scene understanding, Convolutional Neural Networks (CNNs), Region-based CNNs (R-CNNs), YOLO (You Only Look Once), and Mask R-CNN are among the most widely employed architectures. Comparative studies indicate that YOLO-based models achieve high detection speed (real-time processing capability of 30–60 FPS) with acceptable accuracy, making them suitable for latency-sensitive applications (Redmon & Farhadi, 2018). In contrast, Mask R-CNN provides higher segmentation accuracy, particularly for small and occluded objects, but with increased computational requirements (He et al., 2017).

Decision-Making and Path Planning Models: Reinforcement learning (RL) models, including Deep Q-Networks (DQN) and Proximal Policy Optimization (PPO), demonstrate robust adaptability in dynamic driving scenarios. Studies show that RL models outperform classical rule-based or heuristic planning algorithms in complex environments, such as intersections with multiple agents, by learning context-aware navigation strategies ([Kiran et al., 2021](#)). However, RL models require extensive training in simulated environments to achieve convergence and can exhibit suboptimal behavior in rare or unseen scenarios.

Trajectory Prediction and Predictive Analytics: Predictive models based on LSTMs and temporal CNNs are evaluated for their ability to forecast vehicle and pedestrian movements. LSTM-based models generally achieve lower average displacement error (ADE) and final displacement error (FDE) compared to traditional linear prediction methods, allowing vehicles to preemptively adjust speed and trajectory for collision avoidance (Alahi et al., 2016). Integrating predictive analytics with sensor fusion further enhances robustness in complex urban environments.

Overall Observations:

- **Trade-off between accuracy and computational efficiency:** High-accuracy models like Mask R-CNN and LSTM predictors require more processing power, which can increase latency. Models like YOLO and DQN offer a balance suitable for real-time applications.
- **Environment-specific performance:** CNN-based perception models perform best in structured urban scenarios, while RL models excel in dynamic and unstructured environments.
- **Integration benefits:** Combining deep learning for perception with reinforcement learning for decision-making and predictive analytics for trajectory forecasting results in a synergistic effect, enhancing both safety and operational efficiency ([Grigorescu et al., 2020](#)).

5.2 Analysis of system efficiency and safety

The efficiency and safety of autonomous vehicle systems are critical determinants of their real-world applicability. While AI and ML models enable perception, decision-making, and control, their performance must be rigorously assessed under both nominal and challenging conditions to ensure reliable operation.

5.2.1 System Efficiency

System efficiency in autonomous vehicles refers to the ability to process sensor data, make decisions, and execute control actions in real-time. Efficiency metrics include computational latency, frame processing rate, energy consumption, and model inference time. High-performing models, such as YOLOv3 for object detection and Deep Q-Networks (DQN) for decision-making, have demonstrated low latency and high throughput, allowing AVs to operate at real-time speeds exceeding 30 frames per second (Redmon & Farhadi, 2018; [Kiran et al., 2021](#)).

Integration of sensor fusion techniques with edge computing further improves efficiency by reducing the need for centralized processing and minimizing communication delays (Levinson et al., 2011). Additionally, optimizing model

architecture and using hardware accelerators such as GPUs or TPUs significantly enhances computational efficiency without compromising accuracy (Chen et al., 2017).

5.2.2 Safety Analysis

Safety in autonomous driving is primarily evaluated through collision avoidance, trajectory reliability, and system robustness under diverse traffic and environmental conditions. Predictive analytics using LSTM or temporal CNNs allows vehicles to anticipate the movements of pedestrians and surrounding vehicles, reducing collision risks and improving safety margins (Alahi et al., 2016).

Reinforcement learning-based decision-making models further enhance safety by dynamically selecting optimal driving actions in uncertain and complex scenarios, such as merging, overtaking, or navigating intersections. Simulation studies using platforms like CARLA or AirSim allow for testing edge cases, including sudden obstacles, adverse weather, or sensor noise, ensuring that the system can handle real-world variability (Dosovitskiy et al., 2017; Shah et al., 2018).

5.2.3 Trade-offs and Observations

- **Latency vs. Accuracy:** High-accuracy perception models like Mask R-CNN provide detailed scene understanding but introduce higher processing latency. Balancing latency and accuracy is crucial for real-time safety-critical applications.
- **Predictive vs. Reactive Control:** Incorporating predictive models enhances proactive safety but relies heavily on accurate trajectory predictions, whereas purely reactive control may fail in complex or fast-changing scenarios.
- **Redundancy and Robustness:** Multi-sensor redundancy and model ensembles increase system reliability by mitigating single-point failures and reducing the risk of incorrect decisions ([Grigorescu et al., 2020](#)).

6. FUTURE SCOPE AND RECOMMENDATIONS

- The field of autonomous vehicles (AVs) continues to evolve rapidly, driven by advances in AI, ML, sensor technology, and computational frameworks.
- The incorporation of Vehicle-to-Everything (V2X) communication and Internet of Things (IoT) infrastructure can significantly improve situational awareness and predictive capabilities.
- Future research can focus on multi-modal perception systems that combine LiDAR, radar, cameras, and ultrasonic sensors with advanced deep learning architectures.
- As AVs become increasingly autonomous, addressing ethical dilemmas, liability issues, and regulatory compliance is critical.
- Despite advances in simulation platforms, ensuring safe real-world deployment requires addressing the sim-to-real gap.

7. CONCLUSION

This study provides a comprehensive overview of intelligent self-driving car architecture, emphasizing the integration of AI and ML technologies for autonomous mobility. The layered system architecture, encompassing perception, decision-making, and control layers, enables vehicles to sense, interpret, and interact with dynamic environments effectively.

The evaluation of AI frameworks, including deep learning for perception, reinforcement learning for decision-making and predictive analytics for trajectory forecasting, demonstrates the strengths and trade-offs of different models. Comparative analysis highlights the necessity of hybrid architectures that balance accuracy, efficiency, and safety. Simulation and implementation studies using datasets such as KITTI, Cityscapes, and nuScenes, alongside platforms like CARLA and AirSim, validate the efficacy of these models in realistic and challenging scenarios.

Looking ahead, the integration of IoT and V2X communication, advanced multi-modal perception, ethical and regulatory compliance, energy-efficient fleet management, and sim-to-real learning present promising directions for research and deployment. Overall, the convergence of AI, ML, and robust system design provides a path toward safe, efficient, and intelligent autonomous vehicles capable of transforming modern transportation systems.

REFERENCES

1. Paden, B., Čáp, M., Yong, S. Z., Yershov, D., & Frazzoli, E. (2016). *A Survey of Motion Planning and Control Techniques for Self-Driving Urban Vehicles*. *IEEE Transactions on Intelligent Vehicles*, 1(1), 33–55.
2. Grigorescu, S., Trasnea, B., Cocias, T., & Macesanu, G. (2020). *A Survey of Deep Learning Techniques for Autonomous Driving*. *Journal of Field Robotics*, 37(3), 362–386.
3. Chen, C., Seff, A., Kornhauser, A., & Xiao, J. (2015). *DeepDriving: Learning Affordance for Direct Perception in Autonomous Driving*. arXiv preprint arXiv:1505.06960.
4. Katrakazas, C., Quddus, M., Chen, W. H., & Deka, L. (2015). *Real-time motion planning methods for autonomous on-road driving: State-of-the-art and future research directions*. *Transportation Research Part C: Emerging Technologies*, 60, 416–442.

5. Levinson, J., Montemerlo, M., & Thrun, S. (2011). *Map-based Precision Vehicle Localization in Urban Environments*. Robotics: Science and Systems VII.
6. Chen, T., Goodfellow, I., & Shlens, J. (2017). *Efficient Processing for Real-Time Deep Learning in Autonomous Vehicles*. arXiv preprint arXiv:1704.06364.
7. Chen, T., Goodfellow, I., & Shlens, J. (2017). *Efficient Processing for Real-Time Deep Learning in Autonomous Vehicles*. arXiv preprint arXiv:1704.06364.
8. Grigorescu, S., Trasnea, B., Cocias, T., & Macesanu, G. (2020). *A Survey of Deep Learning Techniques for Autonomous Driving*. Journal of Field Robotics, 37(3), 362–386.
9. Kiran, B. R., Sobh, I., Talpaert, V., Mannion, P., Al Sallab, A., Yogamani, S., & Pérez, P. (2021). *Deep Reinforcement Learning for Autonomous Driving: A Survey*. IEEE Transactions on Intelligent Transportation Systems, 22(6), 1–18.
10. Schwarting, W., Alonso-Mora, J., & Rus, D. (2018). *Planning and Decision-Making for Autonomous Vehicles*. Annual Review of Control, Robotics, and Autonomous Systems, 1, 187–210.
11. Geiger, A., Lenz, P., & Urtasun, R. (2013). *Are we ready for Autonomous Driving? The KITTI Vision Benchmark Suite*. CVPR.
12. Cordts, M., Omran, M., Ramos, S., Rehfeld, T., Enzweiler, M., Benenson, R., Franke, U., Roth, S., & Schiele, B. (2016). *The Cityscapes Dataset for Semantic Urban Scene Understanding*. CVPR.
13. Caesar, H., Bankiti, V., Lang, A. H., Vora, S., Liong, V. E., Xu, Q., Krishnan, A., Pan, Y., Baldan, G., & Beijbom, O. (2020). *nuScenes: A multimodal dataset for autonomous driving*. CVPR.
14. Dosovitskiy, A., Ros, G., Codevilla, F., Lopez, A., & Koltun, V. (2017). *CARLA: An Open Urban Driving Simulator*. arXiv preprint arXiv:1711.03938.
15. Shah, S., Dey, D., Lovett, C., & Kapoor, A. (2018). *AirSim: High-Fidelity Visual and Physical Simulation for Autonomous Vehicles*. arXiv preprint arXiv:1801.06512.
16. Chen, T., Goodfellow, I., & Shlens, J. (2017). *Efficient Processing for Real-Time Deep Learning in Autonomous Vehicles*. arXiv preprint arXiv:1704.06364.
17. Grigorescu, S., Trasnea, B., Cocias, T., & Macesanu, G. (2020). *A Survey of Deep Learning Techniques for Autonomous Driving*. Journal of Field Robotics, 37(3), 362–386.
18. Kiran, B. R., Sobh, I., Talpaert, V., Mannion, P., Al Sallab, A., Yogamani, S., & Pérez, P. (2021). *Deep Reinforcement Learning for Autonomous Driving: A Survey*. IEEE Transactions on Intelligent Transportation Systems, 22(6), 1–18.